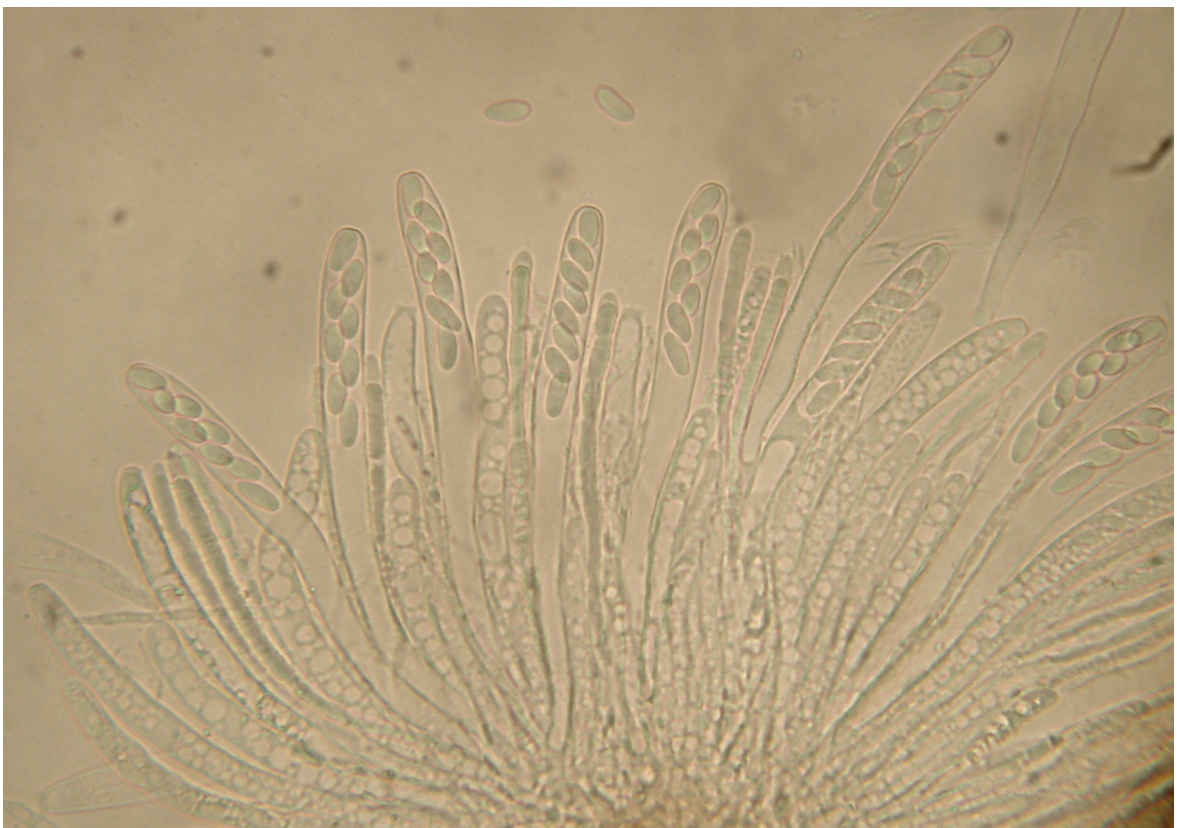
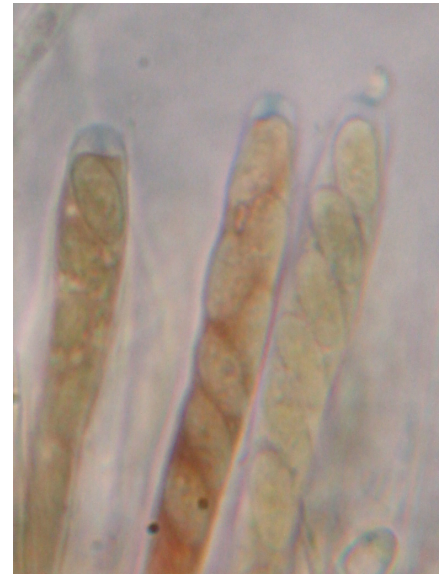


Asci, paraphyses





Asci:

Me = 114.5 x 8.5 μm ; Qe = 13.6
(93 - 128 x 6,2 - 10 μm)

IKI +

Croziers +

Spore measurement in water (Piximètre):

9 [9.5 ; 9.7] 10.3 x 3.7 [3.9 ; 4] 4.1 μm

Q = 2.2 [2.4 ; 2.5] 2.7 ; N = 39 ; C = 68%

Me = 9.6 x 3.9 μm ; Qe = 2.4

