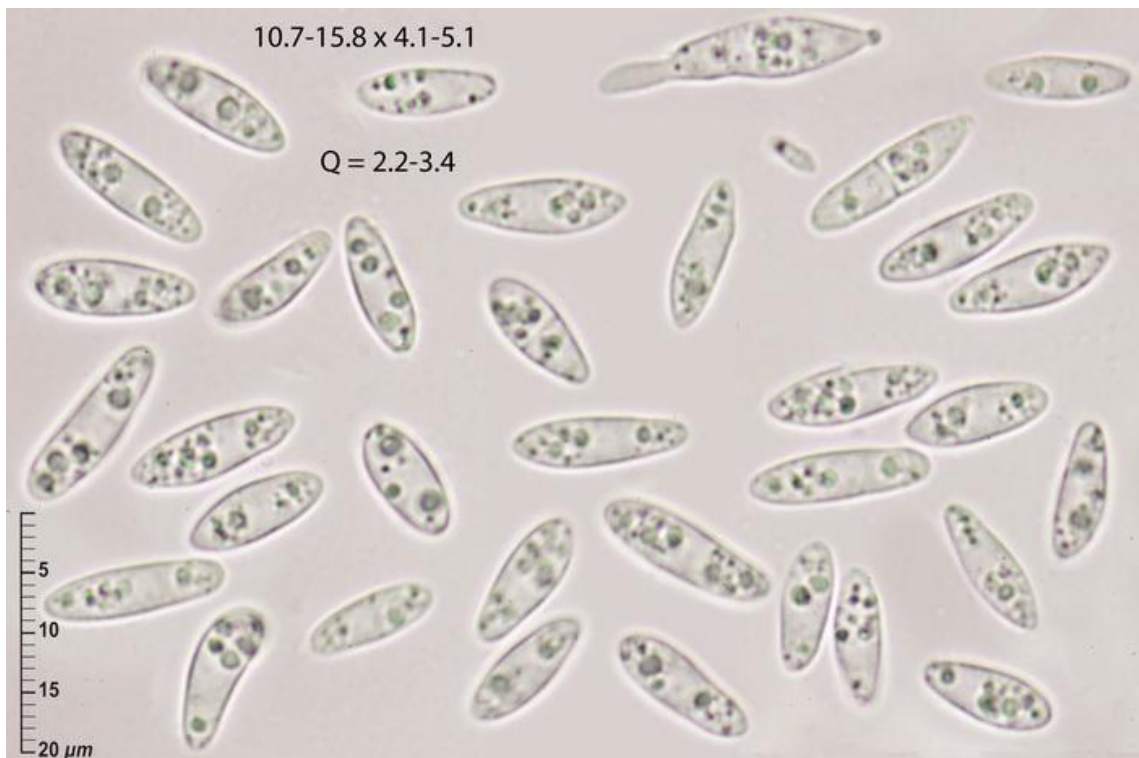


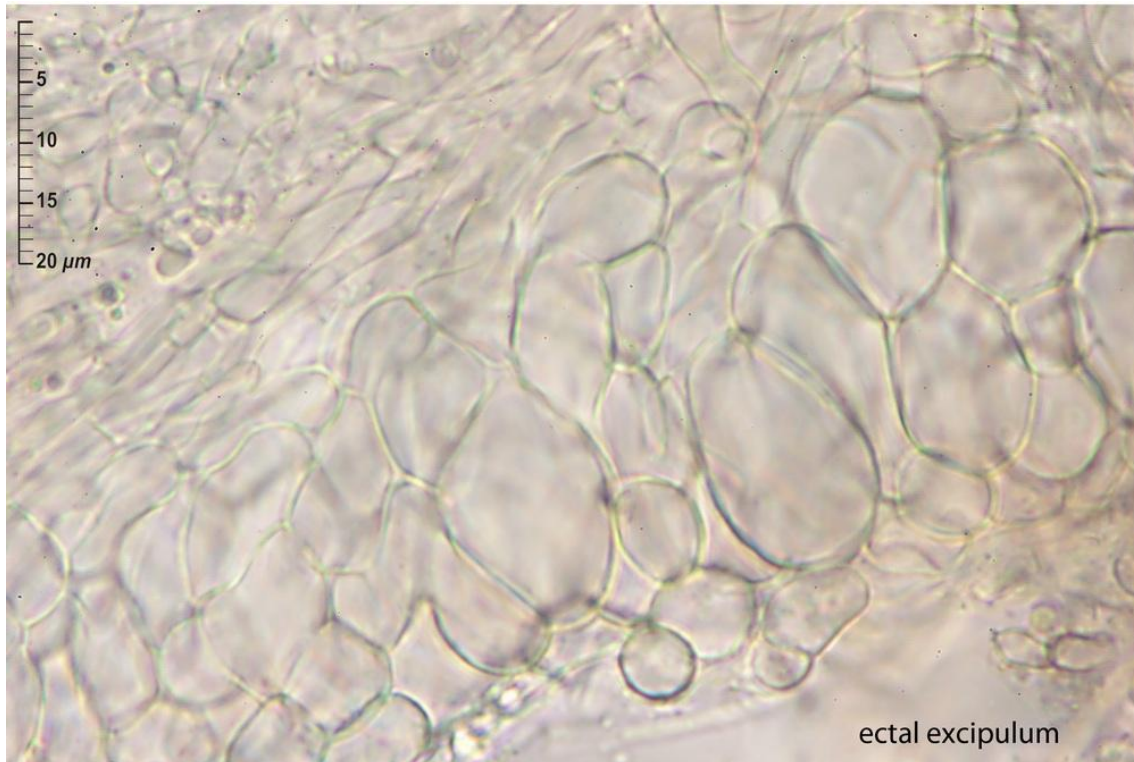
Monasterio de Hermo (Asturias) Spain, 9-VII-2015, decorticated wood semiinmersed in a montaneous (1300 m) stream, leg. J. Linde. Associated fungus: *Vibrissea flavovirens*.



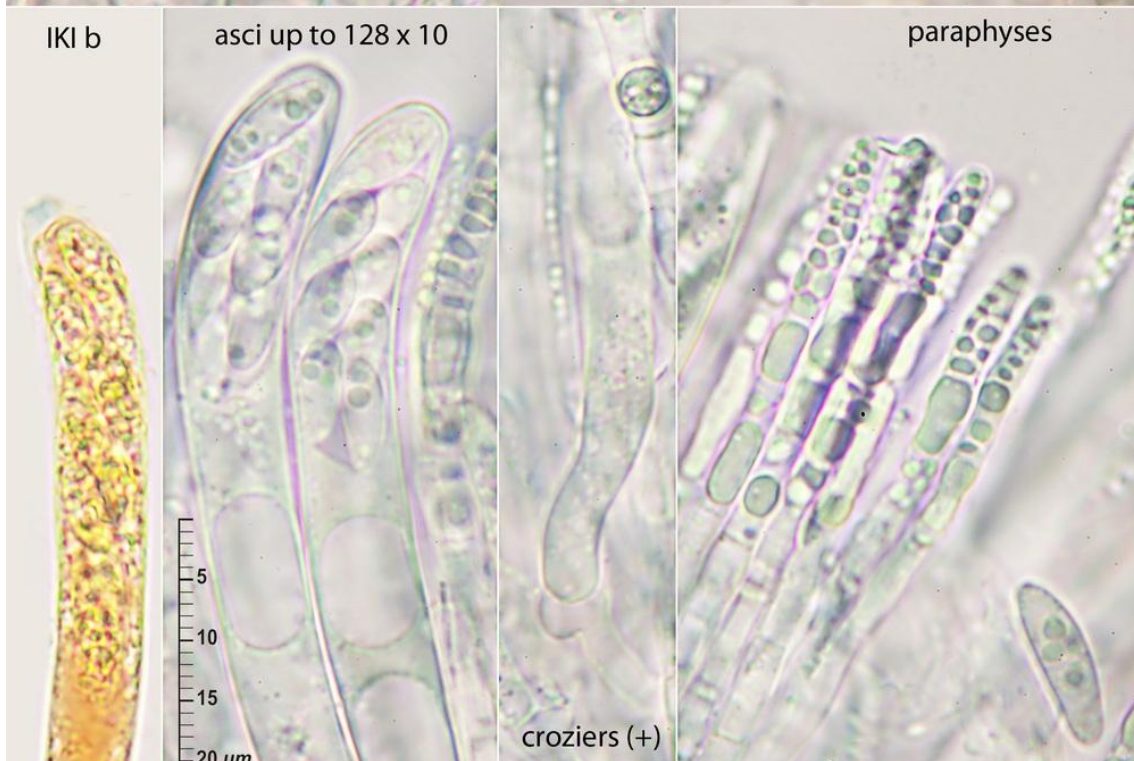
Apothecia gregarious, 1-3 mm broad with a yellow strongly convex hymenium (many of them blackening?) on a short and stout stipe.



Asci up to 128 x 10, 8-spored, arising from croziers, IKI b *Hymenoscyphus*-type  
Medullary excipulum *textura intricata*. Ectal excipulum *textura globuloso-angularis*,  
*prismatica* or very elongated *textura prismatica* towards the flanks. Marginal cells with  
Vbs. Paraphyses with many refractive Vbs.  
Maybe *H. peruni*?



ectal excipulum



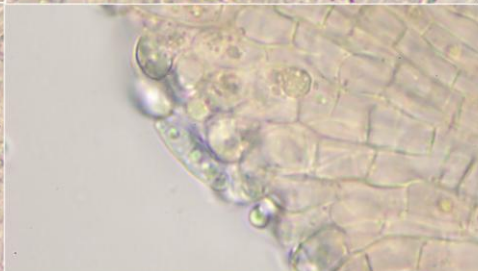
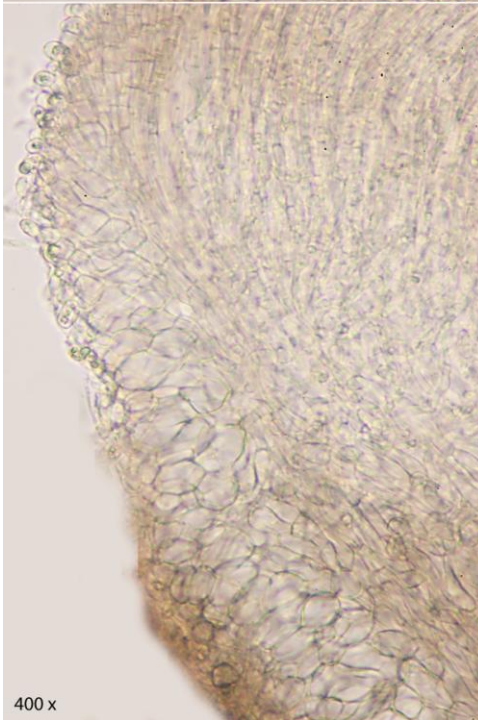
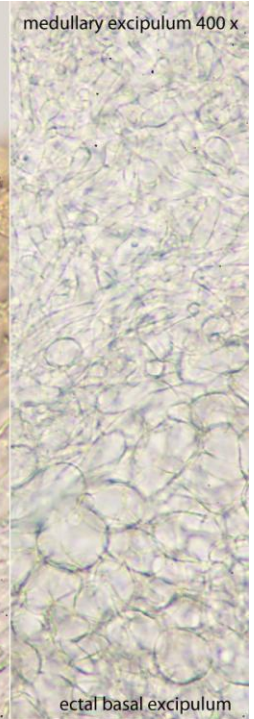
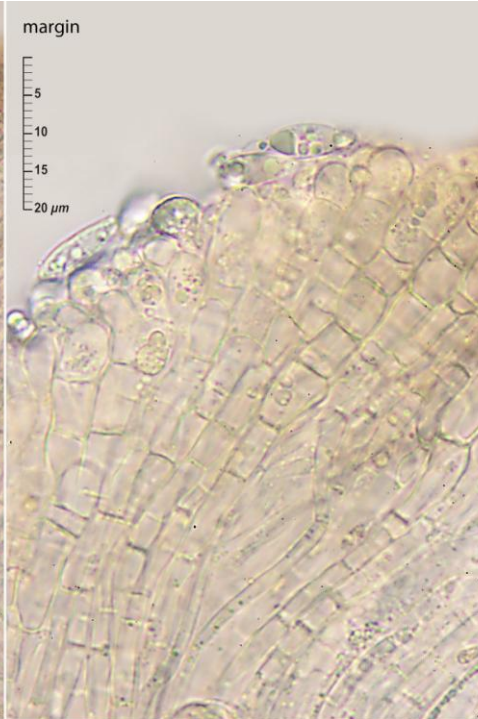
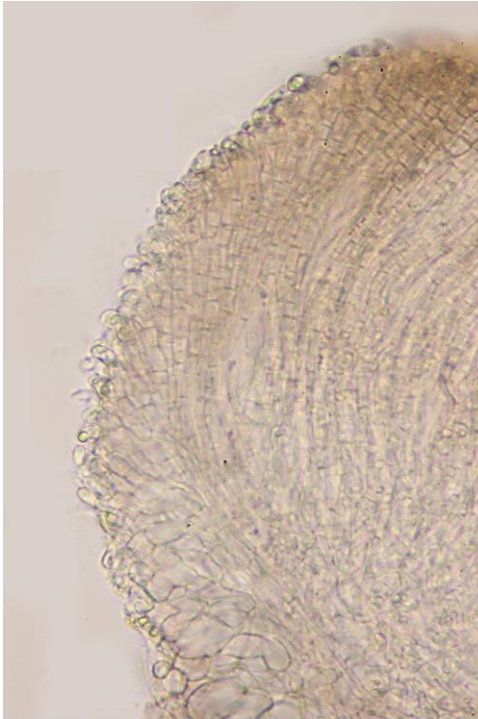
IKI b

asci up to 128 x 10

croziers (+)

paraphyses





margin

medullary excipulum 400 x

5  
10  
15  
20  $\mu\text{m}$

ectal basal excipulum

400 x

5  
10  
15  
20  $\mu\text{m}$