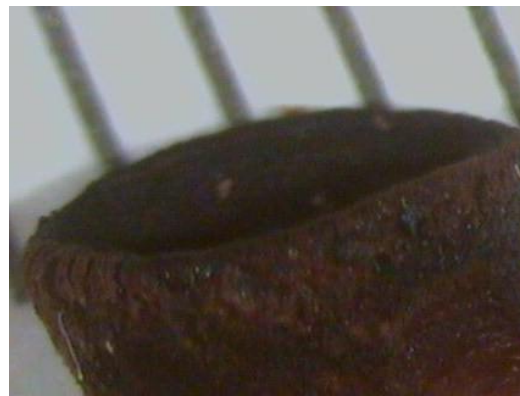




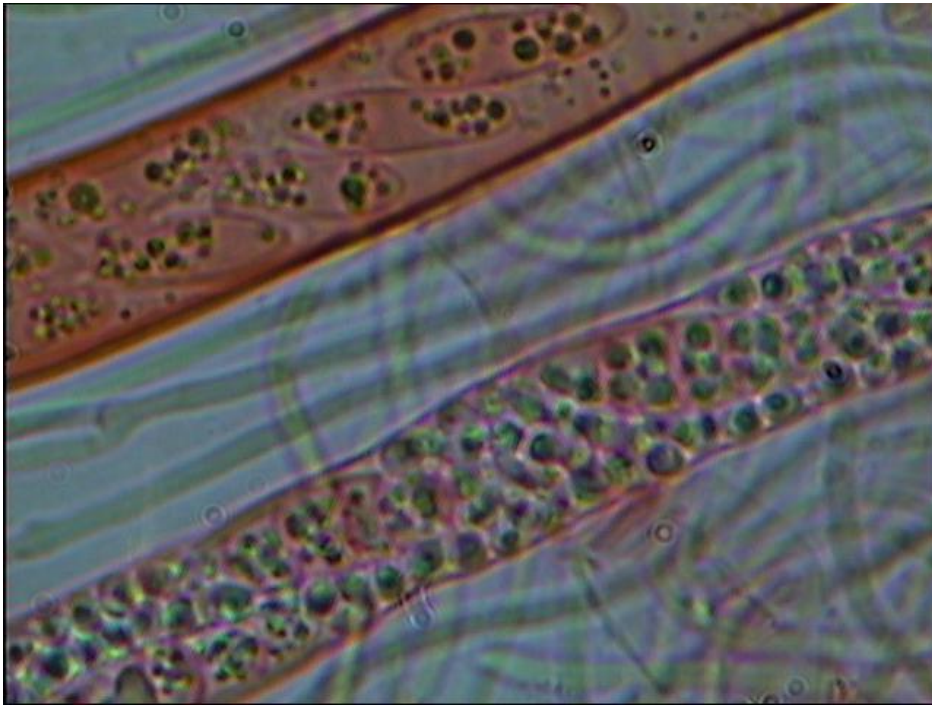
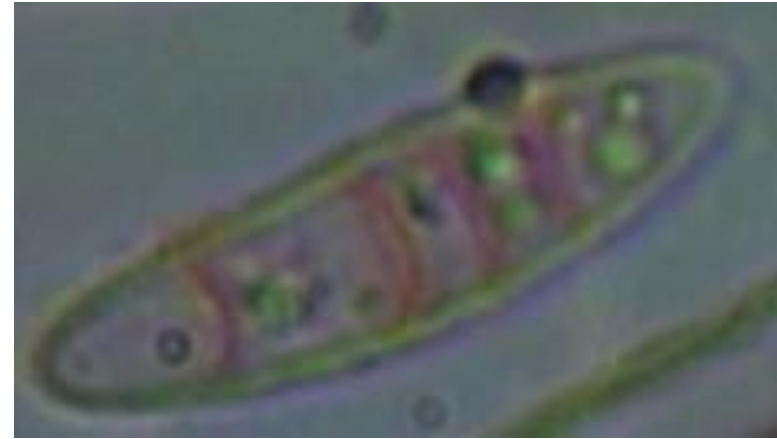
***Patellariopsis atrovinosa* ?**

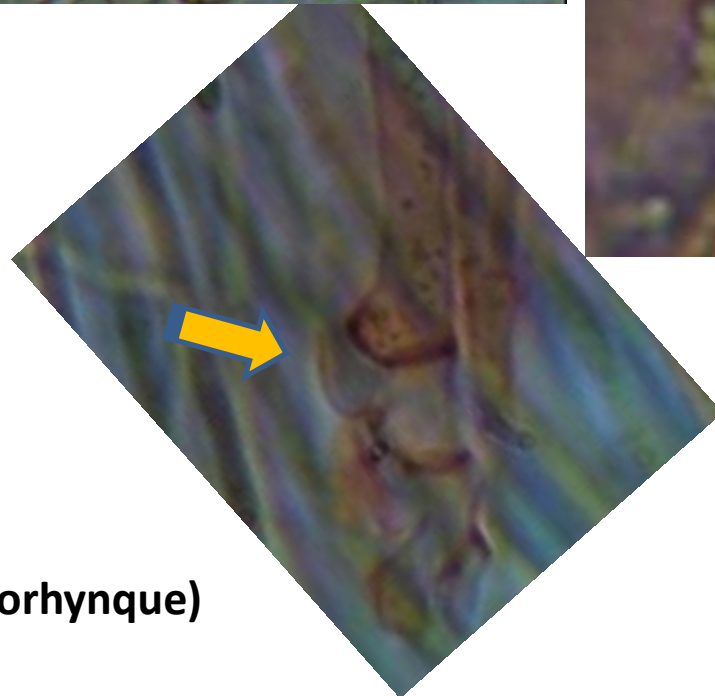
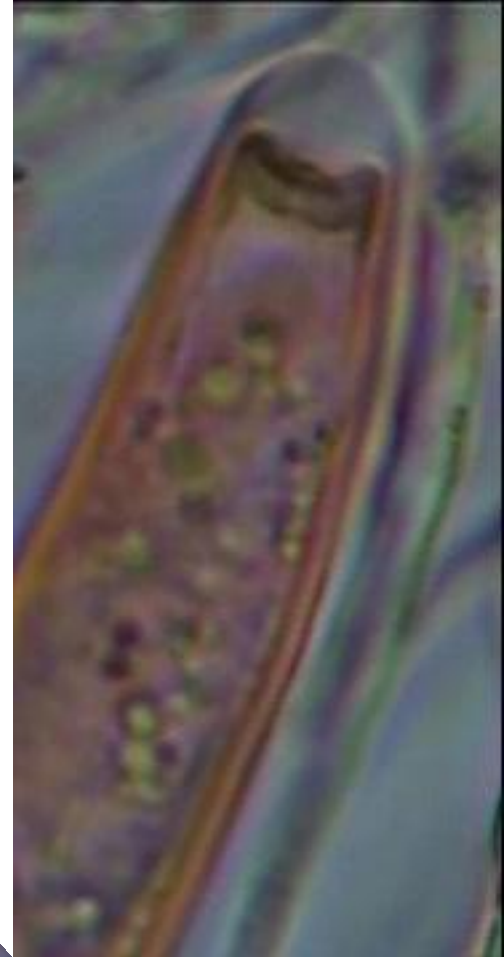
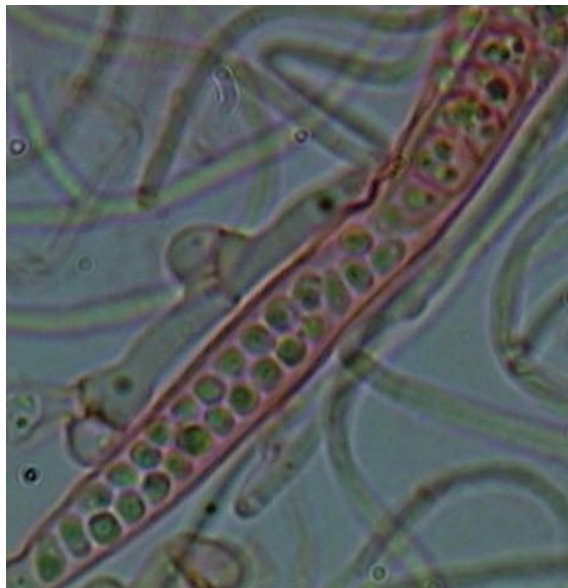
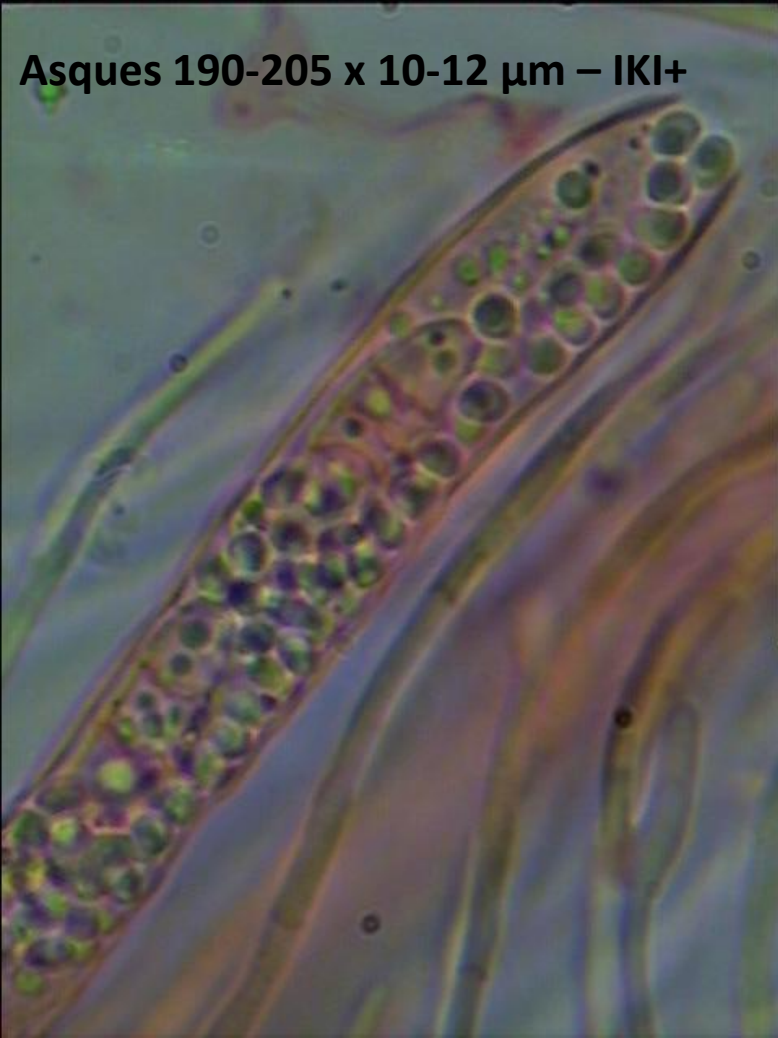
Tourbières de Frasne dans le Doubs (FR), sur bois très décomposé, le 14/10/2009.



**Apothécies de 1 à 3 (4)
mm de diam x 2-3 mm
de ht. Chair gélatineuse.**

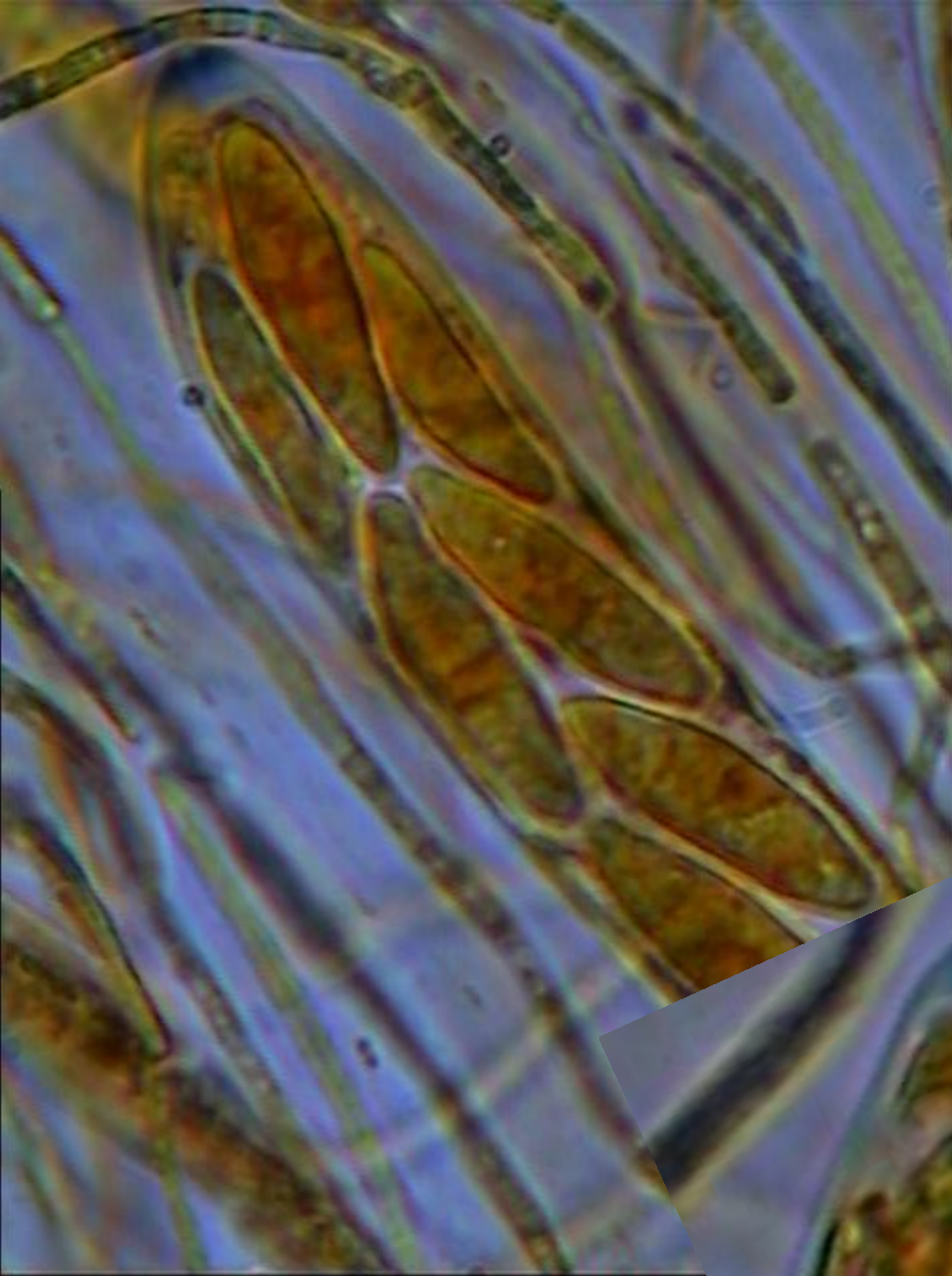
Spores (18) 21-23 x 4,5-5 μm
3 à 5 cloisons à maturité.





Asques avec crochet à la base (pleurothèque)

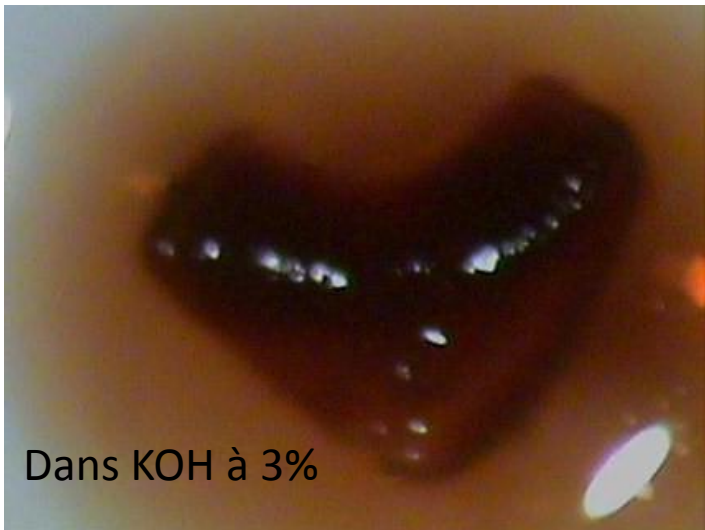
Asques 190-205 x 10-11 μm – IKI+



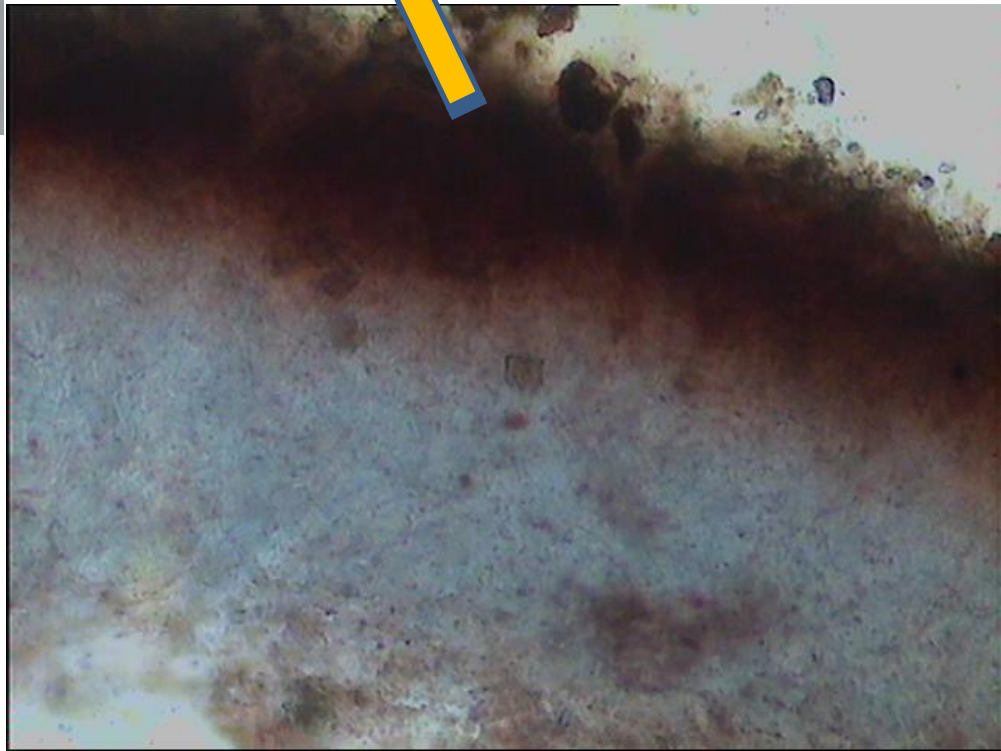
Paraphyses, septées, 1,3-2 μm ,
élargies à 3 μm au sommet



Chair gélatineuse
Brun-vineux



Dans KOH à 3%



Textura intricata

